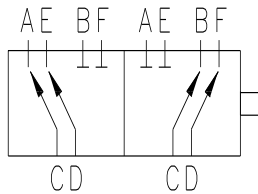


## DSB- Double Selector Hydraulic Ball Valve 6 Way

### Functional Symbol:



Standard



### Description:

The DSB is a Zero-Leak, two position, six way, double selector Ball valve which directs the flow of hydraulic fluid to two separate hydraulic circuits within your hydraulic system. This flow diverter valve allows the operation of two double acting cylinders with one four-way control valve. The DSB ball valve delivers zero-leak load holding and gliding ball design for smooth transition while automatically adjusting for seat wear and potential misalignment. Valves have a flow direction indicator and handle that can be oriented in four positions.

### Operation:

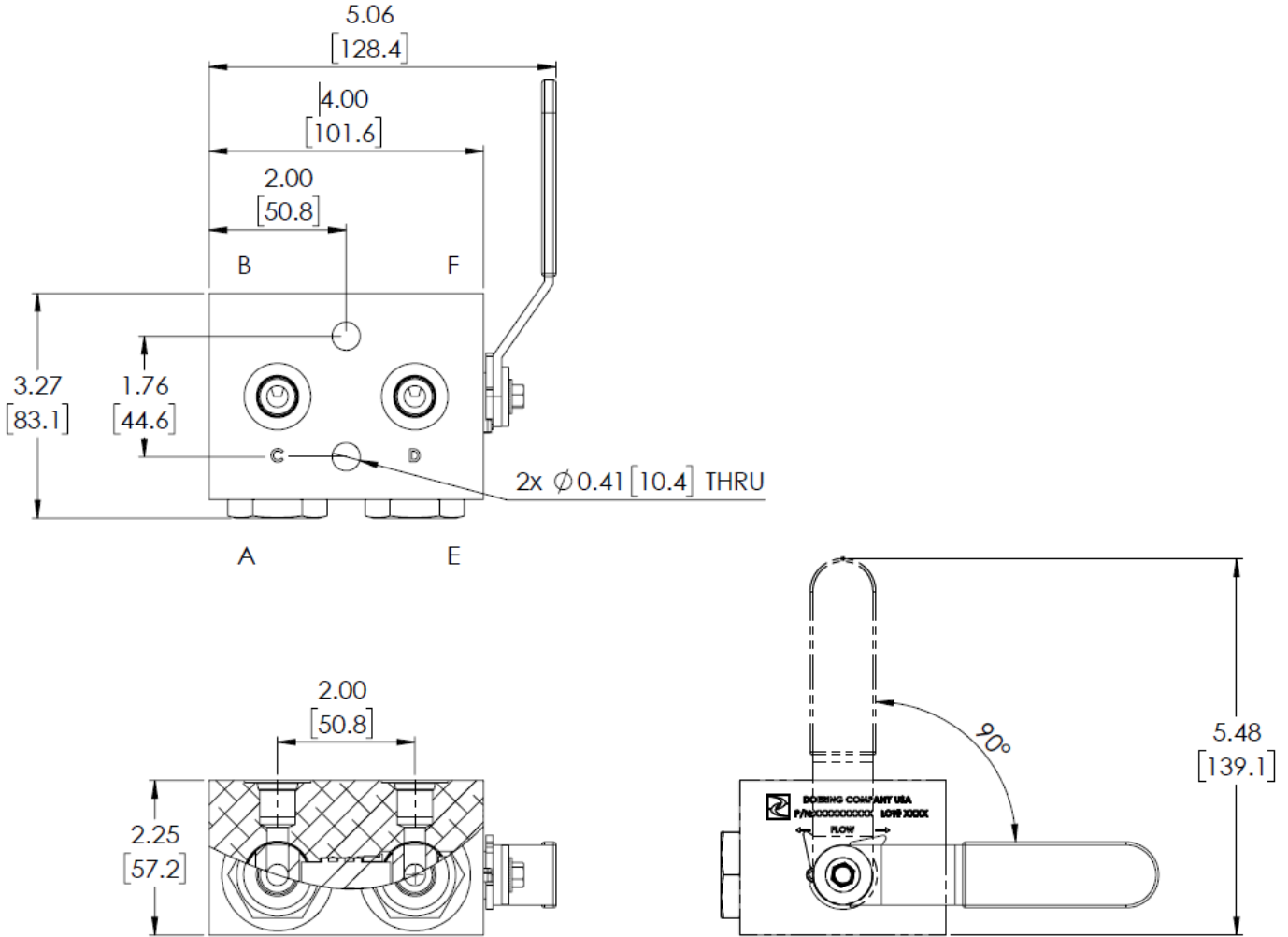
The Metro DSB two position flow diverter ball valve is of the closed-crossover type. When the valve is actuated, one pair of outlet ports will close before the other pair of outlet ports start to open.

### Features:

- Zero-Leak Ball Valve seal design
- Closed Cross-Over design
- Easy to Mount
- Aluminum Body
- Handle with Flow indicator

# DSB - Double Selector Hydraulic Ball Valve 6 Way

**Technical:**



**Ordering Instructions:**

