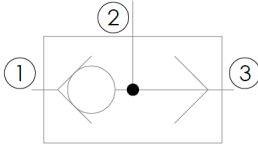


## DSS Shuttle Valve Hydraulic Cartridge

### Functional Symbol:



### Description:

A screw-in, cartridge load-shuttling valve. For use in blocking circuits where a priority of flow or direction is given to a higher pressure circuit over a lower pressure circuit.

### Operation:

Shuttle valve will allow flow from the higher of port 1 or port 3 to port 2.

### Features:

Hardened seat for long life and low leakage.

Rapid response to load direction changes.

### Ratings:

Operating Pressure: 3,500 psi (241 bar)

Flow Ratings: 1.5 gpm (5.68 lpm)

Operating Temperature: -40 to 250°f (-40 to 120°c)

Leak Rate: Less than 5 drops/min. Max

Installation Torque: 4-5 ft-lbs (5.4-6.8 N-m)

Cavity: VC04-B3

Orientation restrictions: None

Fluids: Mineral based or synthetic hydraulic fluid with lubricating properties.

