

Orifice $\phi.158$ with $\phi.095$ Restriction

Throttle of Flow area = $.0125 \text{ Inch}^2$

Full Flow Achieved at $.08$ " Travel.

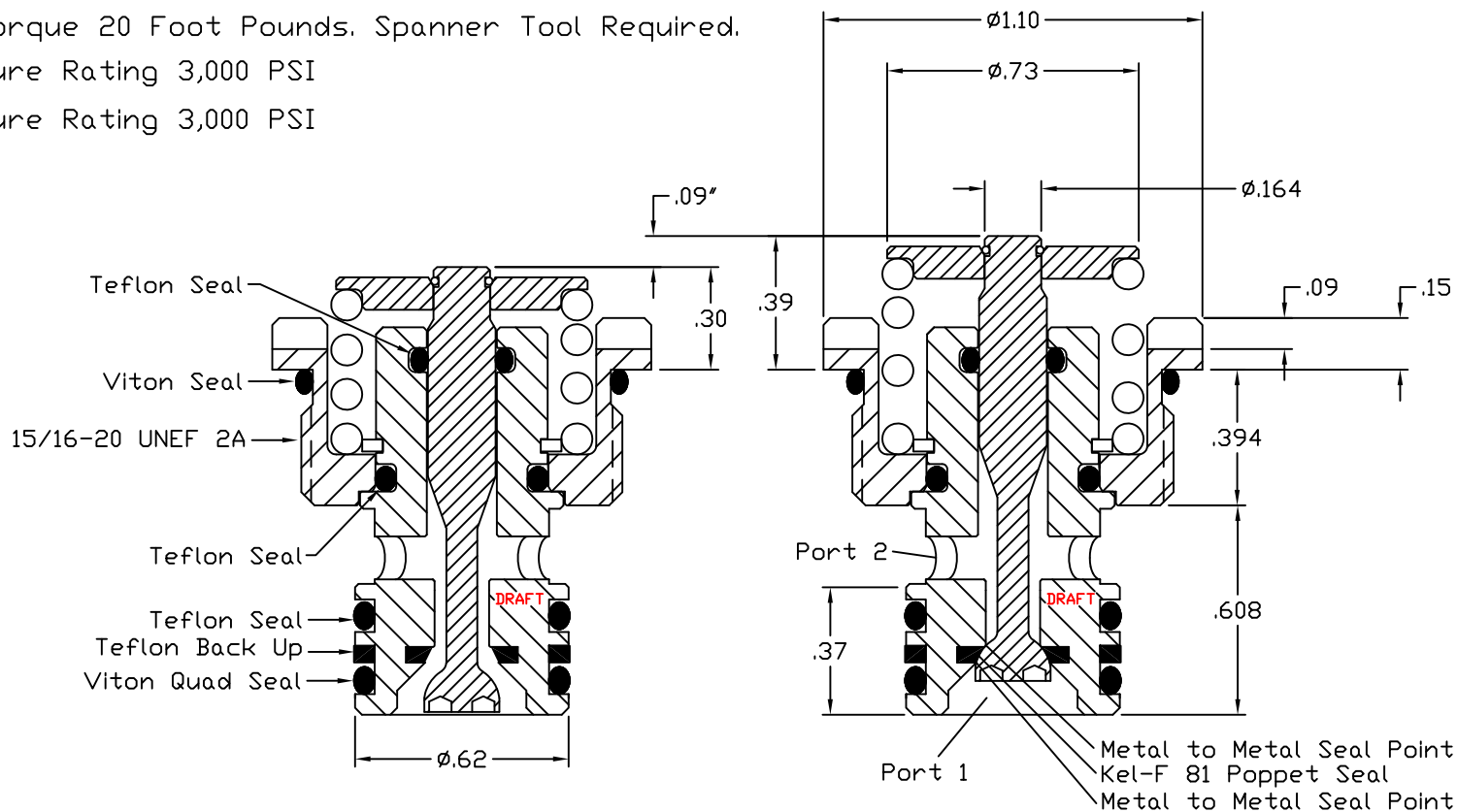
Recommended Stroke $.09$ "

Valve is Solid and can be damaged at $.13$ " Travel.

Installation Torque 20 Foot Pounds. Spanner Tool Required.

Port 2 Pressure Rating 3,000 PSI

Port 2 Pressure Rating 3,000 PSI



Doering Valve
Actuated $.09$

Doering Valve
Non Actuated

DRAFT Russ 1/31/13 (1/23/13)

Doering Valve