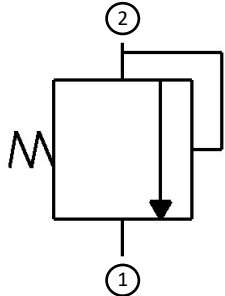


Inline Pressure Relief Valve Hydraulic (Metro)

Functional Symbol:



Description:

Hydraulic Inline Pressure Relief Valve

RV- Inline Pressure Relief Valve, male/ female design



RVF- In line Pressure Relief Valve, female/female design.



Operation:

RV-RVF Direct-acting relief valves are normally closed, pressure-limiting valves used to protect hydraulic systems from pressure spikes. When the pressure at the inlet reaches the valve setting, the valve starts to open, throttling flow to limit the pressure rise.

Features:

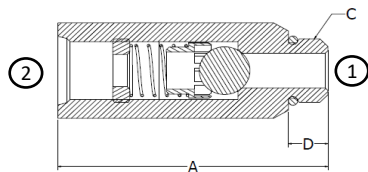
- Factory set to your requested pressure relief.
- Inline valve will operate when mounted in any position in your hydraulic system.
- One piece zinc plated steel body for extra strength and reliability in rugged applications.
- All in line valves are made in the U.S.A.

Ratings:

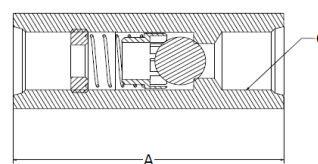
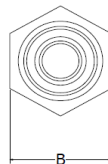
Operating Pressure: 3000 psi (207 bar)

Operating Temperature: -40 to 100° C (-40 to 212° F) with Buna N seals, only applicable to SAE sizes.

Technical:



RV- Inline Pressure Relief Valve M-F



RVF - Inline Pressure Relief Valve F-F

RV "A" Length Inch, (MM)	RVF "A" Length Inch, (MM)	"B" Hex Size Inch, (MM)	"C" Threads	"D" Length Inch, (MM)	"E" Weight Ounces, (kg)
3.0, (76.2)	3.0, (76.2)	1.12 (28.5)	08- SAE #8	.44 (11.2)	8 (.23)
3.0, (76.2)	3.38, (85.9)	1.13 (28.6)	10- SAE #10	.50 (12.7)	8 (.23)
3.0, (76.2)	3.0, (76.2)	1.00 (25.4)	38- 3/8-18 NPT	.75 (19.1)	9 (.23)
3.0, (76.2)	3.0, (76.2)	1.06 (26.9)	40- 3/8 -18 NPT male to 1/2 -14 NPT female	.75 (19.1)	9 (.23)
3.0, (76.2)	3.0, (76.2)	1.06 (26.9)	50- 1/2 -14 NPT	.81 (20.6)	9 (.23)
3.38, (85.9)	3.68, (93.5)	1.38 (35.1)	60- 3/4 -14 NPT	.81 (20.6)	16 (.45)

Inline Pressure Relief Valve Hydraulic (Metro)

Ordering Information:

RV - 08 - 1250

Model Number	"C" Threads	Set Pressure*
RV Inline Pressure Relief Valve (Male-Female)	08 #8 SAE	50 50 psi (3.45 bar)
	10 #10 SAE	100 100 psi (6.9 bar)
	38 3/8"-18 NPT	250 250 psi (17.25 bar)
	40 3/8" NPT Male to 1/2" NPT Female	500 500 psi (34.5 bar)
	750 750 psi (51.75 bar)	
	50 1/2"-14 NPT	1000 1000 psi (69 bar)
RVF Inline Pressure Relief Valve (Female-Female)	60 3/4"-14 NPT	1250 1250 psi (86.25 bar)
		1500 1500 psi (103.5 bar)
		1750 1750 psi (120.75 bar)
		2000 2000 psi (138 bar)
		2250 2250 psi (155.25 bar)
		2500 2500 psi (172.5 bar)
		2750 2750 psi (189.75 bar)

* Custom set pressures also available