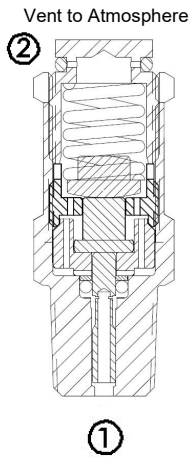
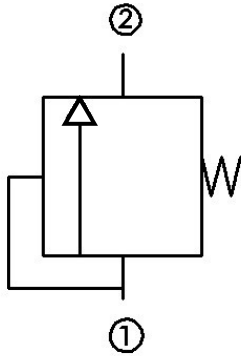


## Pneumatic Pressure Relief Valve - 2009 Series

### Functional Symbol:



### Operation:

The Pneumatic Pressure Relief Valve works excellent as a safety relief valve to protect against or limit pressure buildup to prevent equipment failure. When the valve achieves set pressure, the valve will open and vent to the atmosphere, then reseating within 10% of crack pressure.

These safety relief valves are highly reliable and dependable. Precision machined parts manufactured from stainless steel to assure long life and valve opening at the set pressure long after installation.

### Features:

- Bubble tested for zero leak
- Adjustable crack pressure can be preset at Doering and Loctite to ensure for tamper resistance.
- Fast acting
- 100% tested
- All valves are made in the U.S.A. and available for fast delivery.

### Technical:

- **Operating Pressure:** 3600 psi (207 bar)
- **Operating Temperature:** -40 to 100° C (-40 to 212° F) with Buna N seals.
- **Materials:** Stainless steel exterior, includes brass and steel internals.

### Ordering Information:

2009	2	C	NN	2000	
Model Number	Mounting Thread	Spring Range	Seals	Optional Crack Pressure*	Optional Loctite
2009 Relief Valve, Safety Pop Off	1	B	NN	Blank	Blank
	2	500-1000 psi (34-103 bar)	Buna-N (Nitrile NBR)	Not set	No Loctite
	4	C	RR	500	Loctite Blue
		1500-2950 psi (103-204 bar)	EPR/EPDM	1000	Loctite Red
		3000-3600 psi (207-276 bar)	K75K	1500	
			V7	2000	
		V	2500		
		V	3000		
		V	3500		

\* Custom set pressure also available