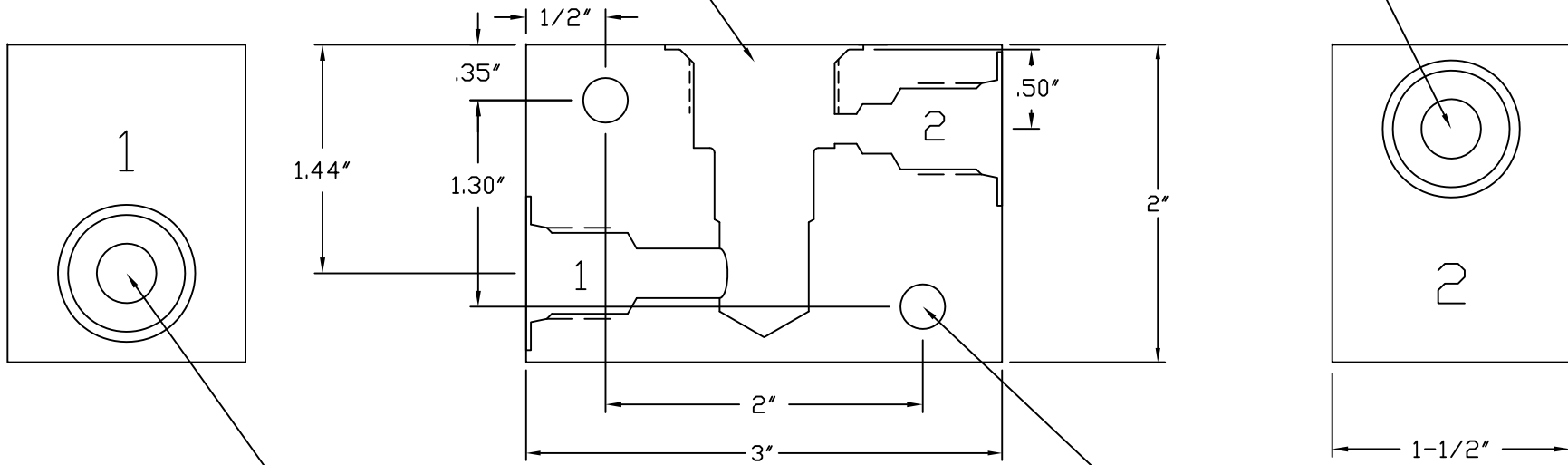


6343 RIVER ROAD SE ■ CLEAR LAKE, MN 55319 USA  
 Telephone: 320-743-2276 ■ Fax: 320-743-3723  
 mailbox@doering.com ■ www.doering.com

No. 2 Test Port, SAE-6 (O-Ring Port)

Valve Cavity fits 3312, 3312F Doering Cartridge Valves.



No. 1 Test Port, SAE-6 (O-Ring Port)

Mounting Holes: 2 Places  
 $\varnothing 9/32$  (7.14mm)  
 Clearance for 1/4" or M6

**ORDER INFORMATION:**

S3312-#

Ports 1 & 2	Material Option, Pressure Rating
1 (1/8 NPT)	Blank (6061 Aluminum) 3,000 PSIG
2 (1/4 NPT)	S (304 Stainless) 5,000 PSIG
3 (3/8 NPT)	S316 (316 Stainless) 5,000 PSIG
4 (SAE4, ORB)	
6 (SAE6, ORB)	

Doering Company  
 www.doering.com  
 S3312 Spec. Sheet  
 2013 August 16 (RFD)

